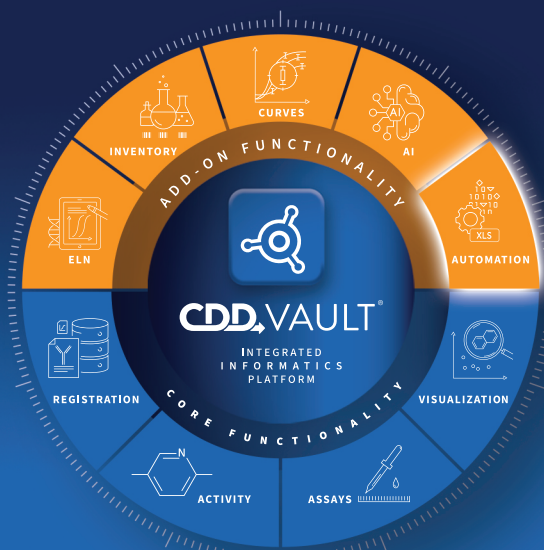




AUTOMATION

DATA SHEET

CDD Vault automation brings additional flexibility and speed to data upload and standardization.



API CONNECTION

- Ensure standardized data entry and processing by leveraging CDD Vault's [RESTful API](#) to import your data.
- Utilize the API to ensure easy downstream data flow to automate your workflows and save time.
- CDD offers publicly available full API documentation to facilitate automation builds to suit your unique needs, including numerous [API Function Calls](#) (GET, POST, PUT, DELETE).
- For added security each API access token is assigned at a per user/account level with specific capabilities set depending on the specific owner's precise role in the CDD Vault being accessed.

SINGLE SOURCE OF TRUTH

- CDD Vault's API enables seamless connectivity with data lakes and an extensive network of partners, allowing you to leverage the full potential of your scientific data for analysis and discovery.
- Automation allows you to use the best of CDD Vault and your tools within your natural workflows. Connecting industry-leading tools with a single source of truth optimally leverages your most finite resource - your time.

Public API documentation on support.collaborativedrug.com

The screenshot shows the 'CDD Support' page with a search bar and navigation tabs for 'CDD Vault', 'Knowledgebase', 'Requests', and 'New Request'. The 'Knowledgebase' tab is active, displaying a list of API Function Calls on the left and a detailed description of the section on the right. The list includes: API Background Processes (GET), API Execution Metrics (GET), Async Export (GET, DELETE), Batch Move Job(s) (GET, POST, DELETE), Batch(es) (GET, POST, PUT), Collection(s) (GET, POST, PUT, DELETE), Control Layouts (GET, POST, DELETE), Data Sets (GET), ELN Entries (GET, PUT, POST), Fields (GET), Files (GET, POST, DELETE), Import_Parsers (GET), Inventory_Locations (GET), Inventory_Samples (GET, POST, PUT, DELETE), Mapping_Templates (GET), Molecule(s) (GET, POST, PUT), and Plate(s) (GET, POST, PUT, DELETE).

User Roles and Privileges in CDD

Privilege/Role	Read Only	Read Download	Read Export	Read Add - Biology	Read Add	Full Access - Biology	Full Access	Vault Admin
View and search data	✓	✓	✓	✓	✓	✓	✓	✓
Create molecule collections	✓	✓	✓	✓	✓	✓	✓	✓
Post and reply to messages	✓	✓	✓	✓	✓	✓	✓	✓
Download documents		✓	✓	✓	✓	✓	✓	✓
Export search results			✓	✓	✓	✓	✓	✓
Protocols	Create			✓	✓	✓	✓	✓
	Edit others'					✓	✓	✓
	Add data			✓	✓	✓	✓	✓
Plates	Create			✓	✓	✓	✓	✓
	Edit others'					✓	✓	✓
Molecules / Batches	Create				✓		✓	✓
	Edit others'						✓	✓
Data publication	Request			✓	✓	✓	✓	✓
	Approve							✓
Edit vault settings								✓

User roles and privilege options within CDD Vault

CUSTOM PARSERS

- Create custom parsers to automatically transform raw data files into the tabular format to upload directly into CDD Vault.
- Custom parsers allow you to create a column that is filled with a fixed value, extract specific data from a table or convert plate blocks to CDD Vault's standard upload format.
- Custom parsers can be saved and the file transformation can be applied to new files with the same format in the future to save you time.
- Once a parser is applied to your file, you can simply map your columns as you would with a standard CDD Vault file upload.

SEAMLESS INTEGRATIONS

- CDD Vault's best in class API empower users to tailor data management and analysis workflows to their specific research needs, enhancing efficiency and productivity.
- Effortlessly integrate with various research tools and platforms, to enable smooth data exchange and workflow automation using CDD Vault's two-way RESTful API.
- Combine the flexibility of custom parsers with the responsiveness of CDD Vault's API to connect your laboratory instruments to CDD Vault, saving time and effort.

Raw data format

1) Enter Plate Name

Plate Name:

Test_Plate_1

2) Fill in the Compound Plate map.

Compound Map

	1	2	3	4	5	6	7	8	9	10	11	12
A	Negative	Test-1	Test-2	Test-3	Test-4	Test-5	Test-6	Test-7	Test-8	Test-9	Test-10	Positive
B	Negative	Test-1	Test-2	Test-3	Test-4	Test-5	Test-6	Test-7	Test-8	Test-9	Test-10	Positive
C	Negative	Test-1	Test-2	Test-3	Test-4	Test-5	Test-6	Test-7	Test-8	Test-9	Test-10	Positive
D	Negative	Test-1	Test-2	Test-3	Test-4	Test-5	Test-6	Test-7	Test-8	Test-9	Test-10	Positive
E	Negative	Test-1	Test-2	Test-3	Test-4	Test-5	Test-6	Test-7	Test-8	Test-9	Test-10	Positive
F	Negative	Test-1	Test-2	Test-3	Test-4	Test-5	Test-6	Test-7	Test-8	Test-9	Test-10	Positive
G	Negative	Test-1	Test-2	Test-3	Test-4	Test-5	Test-6	Test-7	Test-8	Test-9	Test-10	Positive
H	Negative	Test-1	Test-2	Test-3	Test-4	Test-5	Test-6	Test-7	Test-8	Test-9	Test-10	Positive

3) Fill in the Concentration Plate Map

Concentration Map

	1	2
A	0	0
B	1	1
C	10	10
D	100	100
E	0	0
F	1	1
G	10	10
H	100	100

	Well Name	Compound Name	Concentration (mM)	Raw Data (RFU)	Raw Data	Plate Name
1	A1	Negative	0	44		Test_Plate_1
2	A2	Test-1	0	7154		Test_Plate_1
3	A3	Test-2	0	7412		Test_Plate_1
4	A4	Test-3	0	7097		Test_Plate_1
5	A5	Test-4	0	7474		Test_Plate_1
6	A6	Test-5	0	7699		Test_Plate_1
7	A7	Test-6	0	6678		Test_Plate_1
8	A8	Test-7	0	5732		Test_Plate_1
9	A9	Test-8	0	5634		Test_Plate_1
10	A10	Test-9	0	7222		Test_Plate_1
11	A11	Test-10	0	5814		Test_Plate_1

Raw data form

Data format after using a custom parser

Parser data transformation options

Assign
 Fixed Value
 Tabular Data
 Plate Block

Plate Block Remove
 Area: 12 x 8
 Well Field: Well Name
 Value Field: Raw Data (RFU)
 Join Field: Well Name
 Well Padding: strip zeros
 Repeat: single
 Associate Fixed Value
 Shrink Active Area

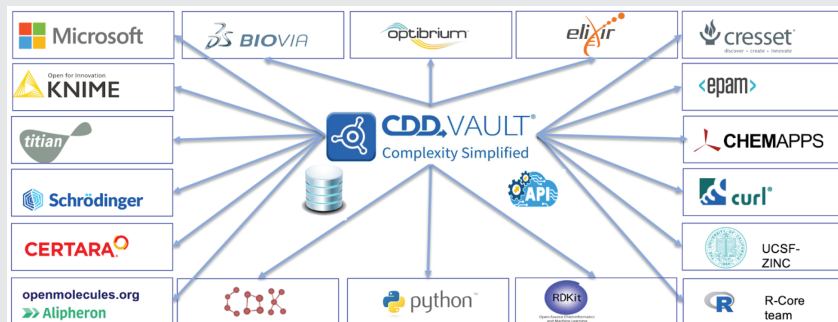
Fixed Value Remove
 Field: Plate Name
 Value: Test_Plate_1
Tabular Data Remove
 Columns: 1
 Rows: 6
 Join Field: Raw Data
 Associate Fixed Value
 Add Replicate
 Reassign Header Columns
 Extend Content Area

 Parser data
 selection
 options

Choose File 96W SP CD...ayout) (2).csv
 .xlsx, .csv, .sdf, or .zip ?
 Project: Demo Project
 Parser type: Plate Based Format Parser
 Upload File

Tabular
 Preview file...
 What's this? ?

Saved parser selection for data upload



CDD Vault API ecosystem

Learn more at
collaborativedrug.com
 or contact us at
info@collaborativedrug.com