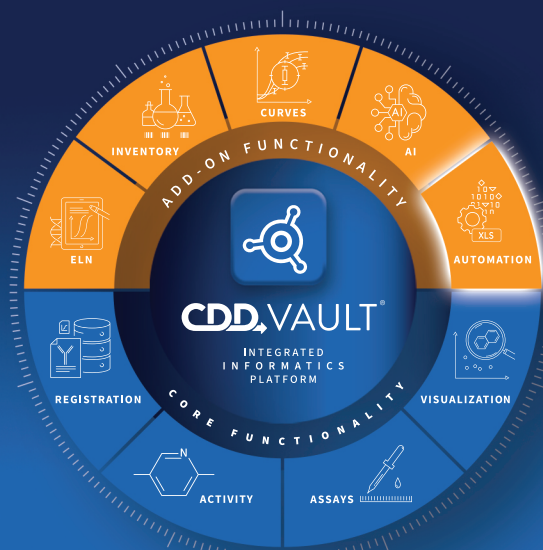




# AUTOMATION

## DATA SHEET

CDD Vault automation brings additional flexibility and speed to data upload and standardization.



## CUSTOM PARSERS

- Create custom parsers to automatically transform raw data files into the tabular format to upload directly into CDD Vault.
- Custom parsers allow you to create a column that is filled with a fixed value, extract specific data from a table or convert plate blocks to CDD Vault's standard upload format.
- Custom parsers can be saved and the file transformation can be applied to new files with the same format in the future to save you time.
- Once a parser is applied to your file, you can simply map your columns as you would with a standard CDD Vault file upload.

## API CONNECTION

- The API empowers users to tailor data management and analysis workflows to their specific research needs, enhancing efficiency and productivity.
- Ensure standardized data entry and processing by leveraging CDD Vault's **RESTful API** to import your data.

### Raw data format

1) Enter Plate Name

Plate Name:	Test_Plate_1
-------------	--------------

2) Fill in the Compound Plate map.

Compound Map												
	1	2	3	4	5	6	7	8	9	10	11	12
A	Negative	Test-1	Test-2	Test-3	Test-4	Test-5	Test-6	Test-7	Test-8	Test-9	Test-10	Positive
B	Negative	Test-1	Test-2	Test-3	Test-4	Test-5	Test-6	Test-7	Test-8	Test-9	Test-10	Positive
C	Negative	Test-1	Test-2	Test-3	Test-4	Test-5	Test-6	Test-7	Test-8	Test-9	Test-10	Positive
D	Negative	Test-1	Test-2	Test-3	Test-4	Test-5	Test-6	Test-7	Test-8	Test-9	Test-10	Positive
E	Negative	Test-1	Test-2	Test-3	Test-4	Test-5	Test-6	Test-7	Test-8	Test-9	Test-10	Positive
F	Negative	Test-1	Test-2	Test-3	Test-4	Test-5	Test-6	Test-7	Test-8	Test-9	Test-10	Positive
G	Negative	Test-1	Test-2	Test-3	Test-4	Test-5	Test-6	Test-7	Test-8	Test-9	Test-10	Positive
H	Negative	Test-1	Test-2	Test-3	Test-4	Test-5	Test-6	Test-7	Test-8	Test-9	Test-10	Positive

3) Fill in the Concentration Plate Map

Concentration Map			Well Name	Compound Name	Concentration (mM)	Raw Data (RFU)	Raw Data	Plate Name
	1	2						
A	0	0	1 A1	Negative	0	44		Test_Plate_1
B	1	1	2 A2	Test-1	0	7154		Test_Plate_1
C	10	10	3 A3	Test-2	0	7412		Test_Plate_1
D	100	100	4 A4	Test-3	0	7097		Test_Plate_1
E	0	0	5 A5	Test-4	0	7474		Test_Plate_1
F	1	1	6 A6	Test-5	0	7699		Test_Plate_1
G	10	10	7 A7	Test-6	0	6678		Test_Plate_1
H	100	100	8 A8	Test-7	0	5732		Test_Plate_1
			9 A9	Test-8	0	5634		Test_Plate_1
			10 A10	Test-9	0	7222		Test_Plate_1
			11 A11	Test-10	0	5814		Test_Plate_1

Data format after using a custom parser

### Parser data selection options

**Assign**

### Parser data transformation options

**Plate Block**

Area: 12 x 8

Well Field: Well Name

Value Field: Raw Data (RFU)

Join Field: Well Name +

Well Padding: strip zeros

Repeat: single

**Fixed Value**

Field: Plate Name

Value: Test\_Plate\_1

**Tabular Data**

Columns: 1

Rows: 6

Join Field: Raw Data +

### Saved parser selection for data upload

96W SP CD...ayout) (2).csv

.xlsx, .csv, .sdf, or .zip ?

Project: Demo Project

Parser type:

What's this? ?

## API CONNECTION

- Utilize the API to ensure easy downstream data flow to automate your workflows and save time.
- CDD offers publicly available full API documentation to facilitate automation builds to suit your unique needs, including numerous **API Function Calls** (GET, POST, PUT, DELETE).
- For added security each API access token is assigned at a per user/account level with specific capabilities set depending on the specific owner's precise role in the CDD Vault being accessed.

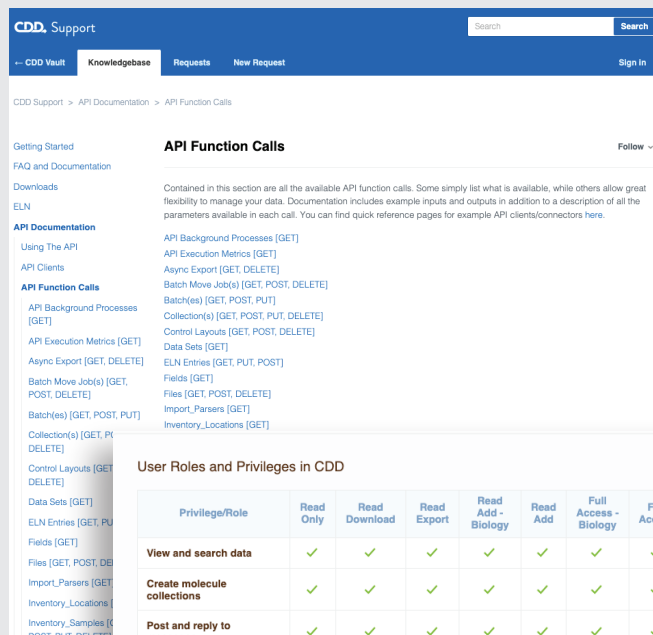
## INSTRUMENT INTEGRATION

- CDD Vault's API facilitates effortless integration with various research tools and platforms, enabling smooth data exchange and workflow automation.
- Combine the flexibility of custom parsers with the ease of CDD Vault's API to connect your laboratory instruments to CDD Vault, saving time and effort.

## SINGLE SOURCE OF TRUTH

- CDD Vault's API enables seamless connectivity with data lakes and an extensive network of partners, allowing you to leverage the full potential of your scientific data for analysis and discovery.
- Automation allows you to use the best of CDD Vault and your tools within your natural workflows. Connecting industry-leading tools with a single source of truth optimally leverages your most finite resource - your time.

Public API documentation on [support.collaboratedrug.com](https://support.collaboratedrug.com)



**API Function Calls**

Contained in this section are all the available API function calls. Some simply list what is available, while others allow great flexibility to manage your data. Documentation includes example inputs and outputs in addition to a description of all the parameters available in each call. You can find quick reference pages for example API clients/connectors here.

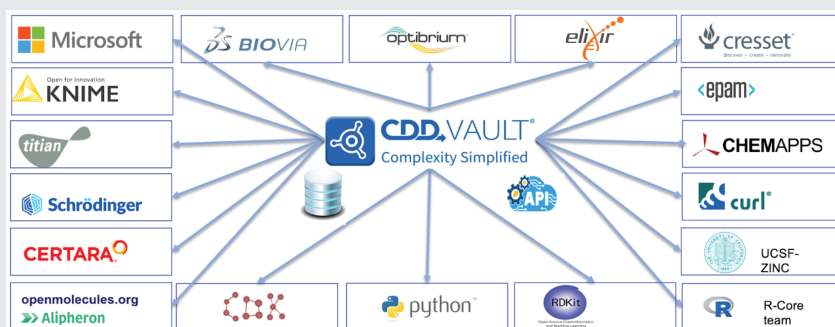
**API Function Calls**

- API Background Processes [GET]
- API Execution Metrics [GET]
- Async Export [GET, DELETE]
- Batch Move Job(s) [GET, POST, DELETE]
- Batch(es) [GET, POST, PUT]
- Collection(s) [GET, POST, PUT, DELETE]
- Control Layouts [GET, POST, DELETE]
- Data Sets [GET]
- ELN Entries [GET, PUT, POST]
- Fields [GET]
- Files [GET, POST, DELETE]
- Import\_Parsers [GET]
- Inventory\_Locations [GET]

**User Roles and Privileges in CDD**

Privilege/Role	Read Only	Read Download	Read Export	Read Add - Biology	Read Add	Full Access - Biology	Full Access	Vault Admin
<b>View and search data</b>	✓	✓	✓	✓	✓	✓	✓	✓
<b>Create molecule collections</b>	✓	✓	✓	✓	✓	✓	✓	✓
<b>Post and reply to messages</b>	✓	✓	✓	✓	✓	✓	✓	✓
<b>Download documents</b>		✓	✓	✓	✓	✓	✓	✓
<b>Export search results</b>			✓	✓	✓	✓	✓	✓
<b>Protocols</b>				✓	✓	✓	✓	✓
Create				✓	✓	✓	✓	✓
Edit others'						✓	✓	✓
Add data				✓	✓	✓	✓	✓
<b>Plates</b>				✓	✓	✓	✓	✓
Create				✓	✓	✓	✓	✓
Edit others'						✓	✓	✓
<b>Molecules / Batches</b>							✓	✓
Create					✓		✓	✓
Edit others'							✓	✓
<b>Data publication</b>				✓	✓	✓	✓	✓
Request				✓	✓	✓	✓	✓
Approve								✓
<b>Edit vault settings</b>								✓

User roles and privilege options within CDD Vault



CDD Vault API ecosystem

Learn more at  
[collaboratedrug.com](https://collaboratedrug.com)  
 or contact us at  
[info@collaboratedrug.com](mailto:info@collaboratedrug.com)